



Let Us Welcome Our UWMC-Montlake New Hires!

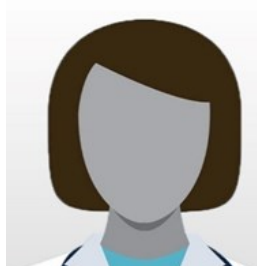
Rebecca Abay, MD

Clinical Instructor



Poornima Bajwa, MD

Clinical Instructor



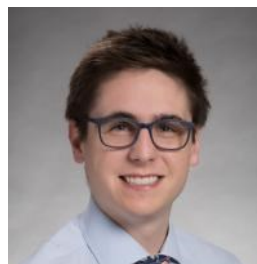
James Barnes, MD

Acting Instructor



Ryan Clodfelter, MD

Clinical Instructor



Diversity, Equity and Inclusion in GIM

As a division within The Department of General Internal Medicine at the University of Washington, GIM is wholeheartedly committed to efforts that improve diversity, equity, and inclusion. These efforts include reducing inequities within our increasingly diverse patient population and the healthcare workforce who cares for them. We pledge to reduce disparities in health outcomes through equity in care delivery, scholarship, and medical education within UW Medicine. With a focus on inclusion, we will continue to increase the recruitment, retention, and advancement of faculty, staff, and learners from groups under-represented in medicine. We are dedicated to serving the needs of our patients, learners, partners, and community.



Let Us Welcome Our UWMC– Montlake New Hires!

**Ifna Das, MD,
PhD**

Clinical Instructor

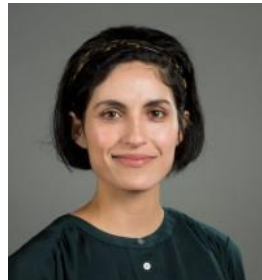


**Elizabeth
Mullins, MD**
Clinical Instructor

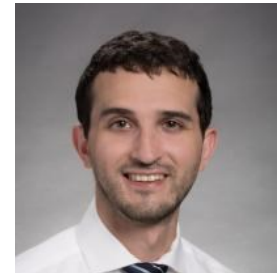


**Laura Granados,
MD**

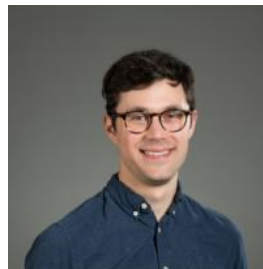
Clinical Instructor



**Corey O'Brien,
MD**
Clinical Instructor



**Nicholas
Iacobelli, MD**
Clinical Instructor



**Brook Pittenger,
MD**
Clinical Instructor



**Alexander
Magee, MD**
Clinical Instructor



**Molly Rosenthal,
MD**
Clinical Assistant
Professor





GIM in the holiday spirit.
Happy New Year everyone!!

Recent Publications

- [Adiposity, related biomarkers, and type 2 diabetes after gestational diabetes: The Diabetes Prevention Program.](#) **Wander PL**, Christophi CA, Araneta MRG, Boyko EJ, Enquobahrie DA, Dabelea D, Goldberg RB, Kahn SE, Kim C, Pi-Sunyer X, Knowler WC. *Obesity (Silver Spring)*. 2021 Nov 18. doi: 10.1002/oby.23291. Online ahead of print. PMID: 34796678.
- [Plasma amino acid profile, a biomarker for visceral adipose tissue that can substitute for waist circumference in Japanese Americans.](#) Tran AM, **Wander PL**, Thomas MK, Leonetti DL, Kahn SE, Fujimoto WY, Boyko EJ. *Obes Res Clin Pract*. 2021 Nov-Dec;15(6):557-563. doi: 10.1016/j.orcp.2021.10.007. Epub 2021 Nov 12. PMID: 34782257.
- [The Effect of Hospital Safety Net Status on the Association Between Bundled Payment Participation and Changes in Medical Episode Outcomes.](#) **Joshua M Liao**, Paula Chatterjee, Erkuan Wang, John Connolly, Jingsan Zhu, Deborah S Cousins, Amol S Navathe. *J. Hosp. Med.* 2021 December;16(12):716-723. Published Online First November 17, 2021 | 10.12788/jhm.3722.
- [Interspecialty Othering: A Qualitative Analysis of Physician Interpersonal Conflict at the Time of Admission From the Emergency Department.](#) Schrepel C, **Amick AE**, **Bann M**, Watsjold B, Jauregui J, S Ilgen J, Sebok-Syer SS. *Acad Med*. 2021 Nov 1;96(11S):S215. doi: 10.1097/ACM.0000000000004273. PMID: 34705717.
- [Policy in Clinical Practice: Hospital Price Transparency.](#) **White AA**, **Liao JM**. *J Hosp Med*. 2021 Nov;16(11):688-690. doi: 10.12788/jhm.3698. PMID: 34730510.
- [Clinical presentation, complications, and outcomes of hospitalized COVID-19 patients in an academic center with a centralized palliative care consult service.](#) Baker SM, Leedy DJ, Klafter JA, Zhang Y, Secret KM, Osborn TR, Cheng RK, Judson SD, **Merel SE**, Mikacenic C, Bhatraju PK, Liles WC. *Health Sci Rep*. 2021 Nov 2;4(4):e423. doi: 10.1002/hsr2.423. eCollection 2021 Dec. PMID: 34754946.